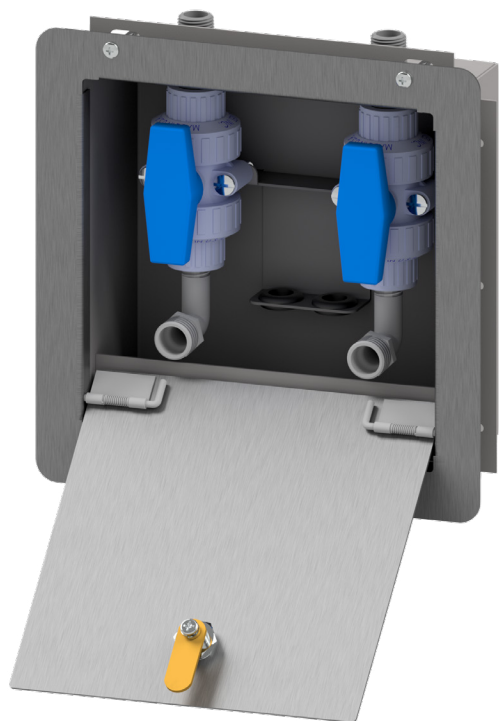


DIALYSIS BOX - A663

Item: _____

☐ **A663** Dialysis Box**STANDARD FEATURES**

- Fabricated using heavy gauge type 316 stainless steel.
- Double Valve Fixture.
- Overall Box Size 10.375" x 10.375"
- Rough-in Size 8.625" x 8.625"
- Removable Door with key lock.

Unit may be pictured with some optional features.

**WARNING:** Cancer and Reproductive Harm
- www.P65Warnings.ca.gov.**► DESCRIPTION**

The A663 dialysis box is a fully recessed stainless steel box designed for use with dialysis machines which utilize solutions that aggressively attack common steel, brass, iron and other stainless steel. This box is constructed of heavy gauge, type 316, stainless steel. All seams are continuously welded to form a one piece unit. Interior of the box is bead blasted for a clean surface. The welded hose bracket will hold two discharge hoses. The tailpiece waste connection is heavy gauge and provides primary discharge for the unit. The valves are polypropylene and are securely anchored in the unit. A flushing nipple is provided for installation in the valve outlet when the lines are flushed into the waste receptor.

► INSTALLATION

Anchor tabs are used to secure the box to the wall. The wall flange is adjustable to cover the space between the wall and the box. The wall flange is securely anchored with Phillip head screws at each corner. The waste outlet can be connected to 2" nominal size glass or plastic drain line with a mechanical coupling.

Due to continuous product improvement Metcraft reserves the right to make changes in design and specifications without prior notice. All dimensions should be verified with the factory for current information.

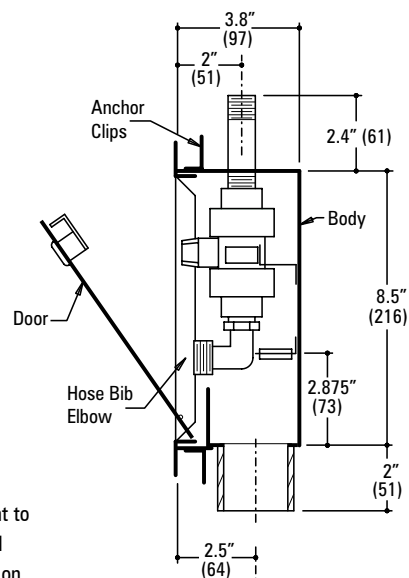
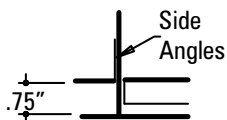
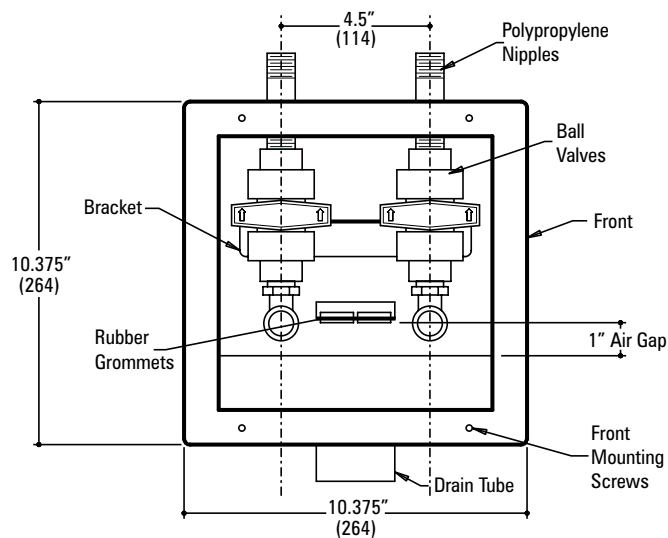
**APPROVED FOR
MANUFACTURING**Company: _____ Name: _____
Signature: _____ Date: _____

OPTIONS & ACCESSORIES

- ☐ **TR** Tamper resistant wall frame screws.
- ☐ **QL** 1/4 Turn latch instead of keyed lock.

DIALYSIS BOX - A663

Item: _____



Due to continuous product improvement Metcraft reserves the right to make changes in design and specifications without prior notice. All dimensions should be verified with the factory for current information.

**APPROVED FOR
MANUFACTURING**

Company: _____ Name: _____
Signature: _____ Date: _____