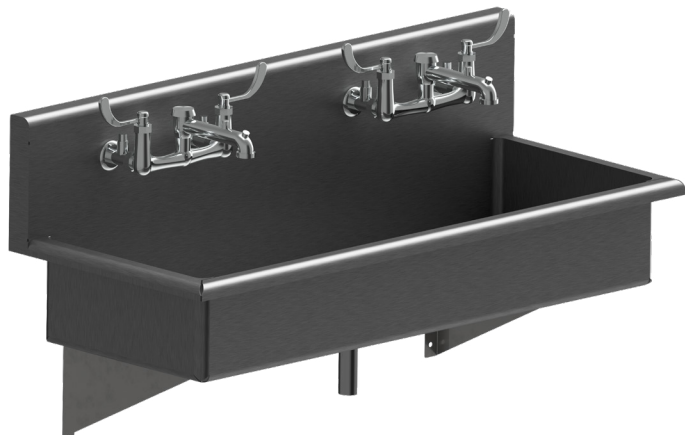


HAND WASH SINK - 6981

Item: _____

☐ **6981** Hand Wash Sink**STANDARD FEATURES**

- **Front Mounted, wall outlet waste.**
- Fabricated using 14 gauge type 304 stainless steel.
- Two matching stainless steel angle brackets.
- 3/4" radiuses coved corners.
- Die-stamped bottom for positive drainage.
- 1-1/2" diameter faucet holes on 8" centers.
- 3-1/2" die formed drain opening.



Unit may be pictured with some optional features.



WARNING: Cancer and Reproductive Harm
- www.P65Warnings.ca.gov.

**► DESCRIPTION**

The 6981 Hand Wash Sink is a commercial grade sink used for industrial hand washing. This sink is a wall mounted sink constructed of 14 gauge type 304 stainless steel. Overall sink size is 48" x 20" (1219mm x 508mm). The unit is seamlessly welded to form a one-piece unit. The sinks incorporate 3/4" radius corners for easy cleaning. The sink is 8" deep with a die stamped bottom for positive drainage. The back splash is 10" high with a 2" flange returned to the wall on 3/4" radius. The front and sides have a 1 1/2" rolled rim jointed into the backsplash. The drain hole accepts a 3 1/2" drain. The faucet holes are 1 1/2" on 8" centers.

► INSTALLATION

This unit is mounted with a standard "Z" clip and two (2) matching stainless steel angel brackets securing the fixture to the wall.

DRAINS
☐ **A271** Flat strainer drain 1-1/2" IPS outlet.

LAVATORY WASTE
☐ **SJP** Brass slip joint P-Trap waste with cleanout 1-1/2" IPS outlet.

FAUCETS
☐ **A301** Surgical Sink Faucet.

☐ **A302** Single Sink Faucet.

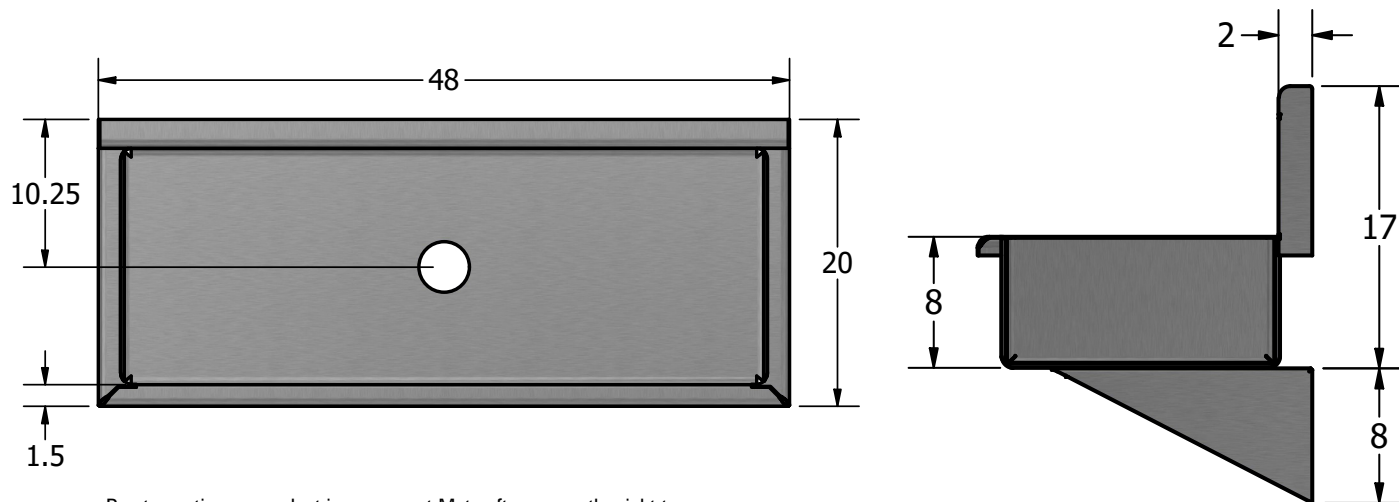
VALVE PUNCHINGS (1-1/2" diameter holes Per Station)
☐ Single Hole Centered

☐ Two Holes: 4" Center to Center

☐ Two Holes: 8" Center to Center (Standard)

☐ Specify: _____

HAND WASH SINK - 6981



Item: _____

Due to continuous product improvement Metcraft reserves the right to make changes in design and specifications without prior notice. All dimensions should be verified with the factory for current information.

**APPROVED FOR
MANUFACTURING**

Company: _____ Name: _____

Signature: _____ Date: _____