

## LAVATORY FIXTURE - R5115-4-11

**Item:** \_\_\_\_\_

**Replaces: CRANE 1-604**

Unit may be pictured with some optional features.



**WARNING: Cancer and Reproductive Harm**  
- [www.P65Warnings.ca.gov](http://www.P65Warnings.ca.gov).

## ► DESCRIPTION

This lavatory fixture is designed for areas with an accessible pipe chase. The fixture is fabricated using 14 gauge type 304 stainless steel, welded to form a vandal resistant unit. Internal piping is stainless steel. Lavatory is designed with a 4" (102mm) high back splash and integral ribbed soap tray. Exposed surfaces are polished to a satin finish. Valves and valve outlets must be specified separately.

## ► INSTALLATION

An accessible pipe chase is required. The installer must provide wall openings for piping and valve operators per rough-in drawings provided by Metcraft. Valves should be installed in the pipe chase. Unit is designed to mount like a China fixture with pushbutton anchors and waste.

## ► PERFORMANCE STANDARDS

This fixture meets or exceeds ASME A112.19.3 / CSA B45.4 standards for "Stainless Steel Plumbing Fixtures".

Listed by



## WALL THICKNESS AND TYPE (Must Specify)

Thickness: \_\_\_\_\_ Type: ☐ Concrete ☐ Block ☐ Steel

### SPOUTS

- ☐ B1 Penal filler/bubbler.  
☐ B1H Suicide Resistant filler/bubbler.  
☐ B2 Filler/bubbler with mouthguard.  
☐ B3H Suicide Resistant filler.

### HAND BASINS

- ☐ OB Oval Basin

### LAVATORY WASTE

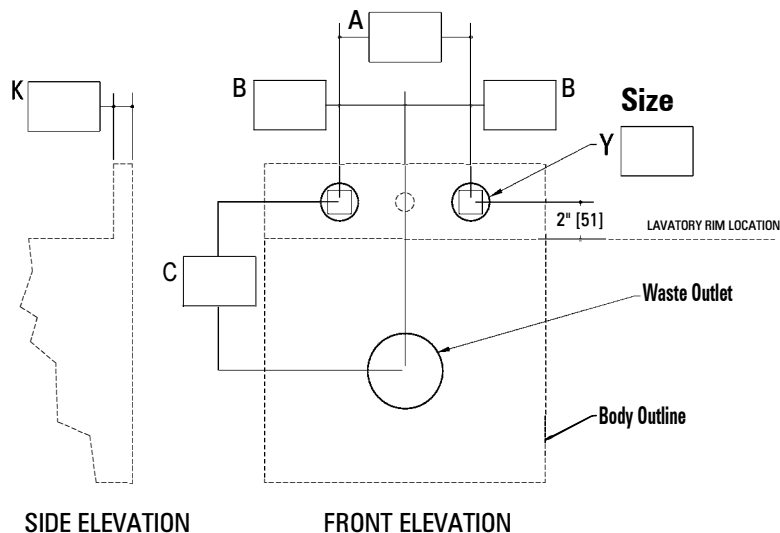
- ☐ ET2 1-1/2" FIPT Elbow Waste.

### OPTIONAL ACCESSORIES

- ☐ HT Towel Hook.  
☐ TB Toothbrush Holder.  
☐ OF Overflow Vent.  
☐ PCC Powder Coat - Anti-microbial White.  
☐ Brace for T Head Anchor Bolt.

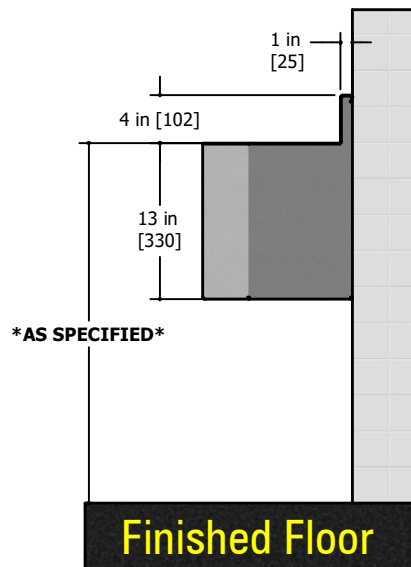
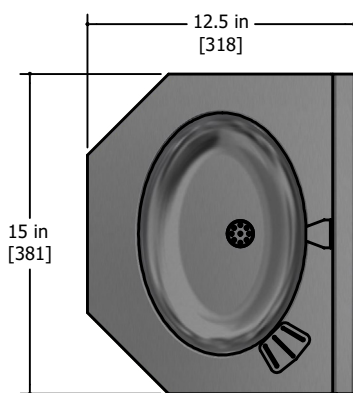
## ADDITIONAL INFORMATION

- A Specify center to center of buttons.  
B Specify center of button to center of fixture.  
Y Specify SIZE & SHAPE of non-standard backsplash holes.  
Shape \_\_\_\_\_  
K Specify splash thickness required for use with original valves.



## LAVATORY FIXTURE - R5115-4-11

Item: \_\_\_\_\_



Due to continuous product improvement Metcraft reserves the right to make changes in design and specifications without prior notice. All dimensions should be verified with the factory for current information.

**APPROVED FOR  
MANUFACTURING**

Company: \_\_\_\_\_ Name: \_\_\_\_\_  
Signature: \_\_\_\_\_ Date: \_\_\_\_\_