

**MOP SINK - 6391-CUSTOM**

Item: \_\_\_\_\_

**STANDARD FEATURES**

- Fabricated using 14 gauge type 304 stainless steel.
- Aprons provided on three sides.
- 2" brass caulk drain w/ removable grid strainer.
- 3/4" radius interior corners for easy cleanability.

Unit may be pictured with some optional features.



**WARNING:** Cancer and Reproductive Harm  
- [www.P65Warnings.ca.gov](http://www.P65Warnings.ca.gov).

---

**► DESCRIPTION**

The 6391 Mop Sink is an all stainless steel mop sink designed for use in commercial applications. This unit provides a very durable and sanitary fixture. The fixture is constructed of 14 gauge type 304 stainless steel. The unit is seamlessly welded to form a one-piece unit. The sinks incorporate 3/4" radius corners for easy cleaning. Aprons are provided on three (3) sides. A 2" brass caulk drain with removable stainless steel grid strainer is provided with the unit.

**TF Tile Flange**
☐ No Flange (Standard)    ☐ Left Side    ☐ Right Side    ☐ Back Side

**WS Stainless Steel Wall Shield - 12" High**
☐ No Panel (Standard)    ☐ Left Side    ☐ Right Side    ☐ Back Side

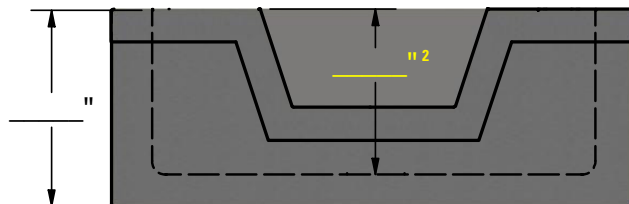
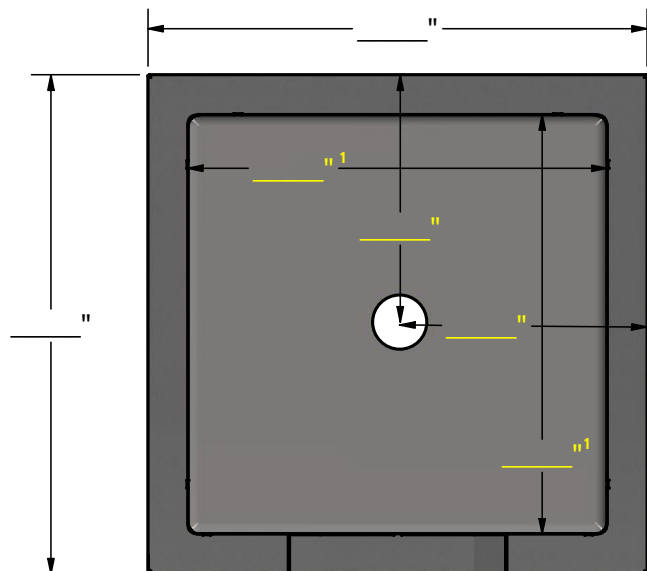
(Wall Shields are sent loose less holes, unless specified.)

**Accessories**
☐ **A744** 1-Station Stainless Steel Mop Holder.  
☐ **A745** 3-Station Stainless Steel Mop Holder.  
☐ **A746** Hose and Holder Assembly

**Drains**
☐ **CD2** 2" Caulk Drain (Standard)  
☐ **CD3** 3" Caulk Drain

## MOP SINK - 6391-CUSTOM

Item: \_\_\_\_\_



<sup>1</sup> Our standard basin is 5" less than the corresponding length or width measurement. This can be customized but there are restrictions.

<sup>2</sup> Our standard basin is 2" less than the total depth. This can be customized but there are restrictions.

Due to continuous product improvement Metcraft reserves the right to make changes in design and specifications without prior notice. All dimensions should be verified with the factory for current information.

**APPROVED FOR  
MANUFACTURING**

Company: \_\_\_\_\_ Name: \_\_\_\_\_  
 Signature: \_\_\_\_\_ Date: \_\_\_\_\_