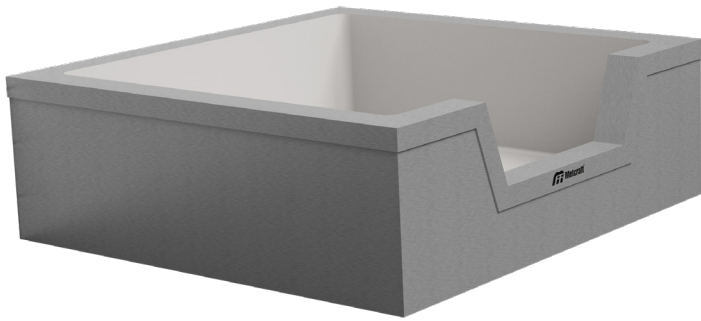


**MOP SINK - 6391**

Item: \_\_\_\_\_



Unit may be pictured with some optional features.

- |   |                                      |
|---|--------------------------------------|
| <input type="checkbox"/> <b>6391-1</b>      | Standard Mop Sink with Dropped Edge. |
| <input type="checkbox"/> <b>6391-2</b>      | Standard Mop Sink with Dropped Edge. |
| <input type="checkbox"/> <b>6391-3</b>      | Standard Mop Sink with Dropped Edge. |
| <input type="checkbox"/> <b>6391-Custom</b> | Standard Mop Sink with Dropped Edge. |

**STANDARD FEATURES**

- Fabricated using 14 gauge type 304 stainless steel.
- Aprons provided on three sides.
- 2" brass caulk drain w/ removable grid strainer.
- 3/4" radius interior corners for easy cleanability.



**WARNING:** Cancer and Reproductive Harm  
- [www.P65Warnings.ca.gov](http://www.P65Warnings.ca.gov).

---

**► DESCRIPTION**

The 6391 Mop Sink is an all stainless steel mop sink designed for use in commercial applications. This unit provides a very durable and sanitary fixture. The fixture is constructed of 14 gauge type 304 stainless steel. The unit is seamlessly welded to form a one-piece unit. The sinks incorporate 3/4" radius corners for easy cleaning. Aprons are provided on three (3) sides. A 2" brass caulk drain with removable stainless steel grid strainer is provided with the unit.

**TF Tile Flange**
☐ No Flange (Standard)    ☐ Left Side    ☐ Right Side    ☐ Back Side

**WS Stainless Steel Wall Shield - 12" High**
☐ No Panel (Standard)    ☐ Left Side    ☐ Right Side    ☐ Back Side

(Wall Shields are sent loose less holes, unless specified.)

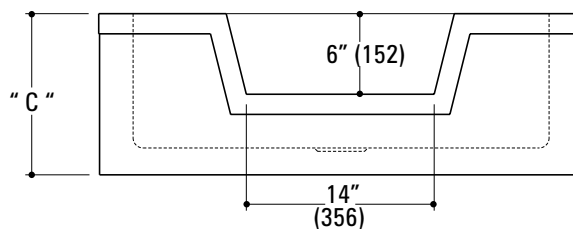
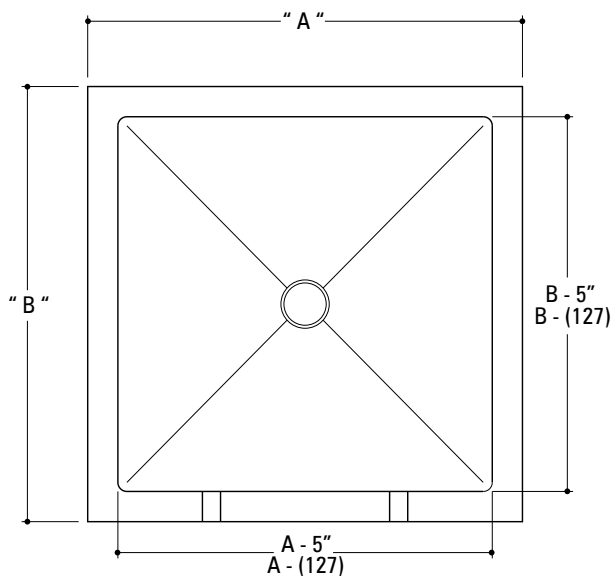
**Accessories**

- ☐ **A744**      1-Station Stainless Steel Mop Holder.
- ☐ **A745**      3-Station Stainless Steel Mop Holder.
- ☐ **A746**      Hose and Holder Assembly
- ☐ **CD2**      2" Caulk Drain (Standard)
- ☐ **CD3**      3" Caulk Drain

	" A "	" B "	" C "
<input type="checkbox"/> <b>6391-1</b>	24" (610mm)	24" (610mm)	12" (305mm)
<input type="checkbox"/> <b>6391-2</b>	32" (813mm)	32" (813mm)	12" (305mm)
<input type="checkbox"/> <b>6391-3</b>	36" (914mm)	36" (914mm)	12" (305mm)
<input type="checkbox"/> <b>6391-Custom</b>			

## MOP SINK - 6391

Item: \_\_\_\_\_



Due to continuous product improvement Metcraft reserves the right to make changes in design and specifications without prior notice. All dimensions should be verified with the factory for current information.

**APPROVED FOR  
MANUFACTURING**

Company: \_\_\_\_\_ Name: \_\_\_\_\_  
Signature: \_\_\_\_\_ Date: \_\_\_\_\_