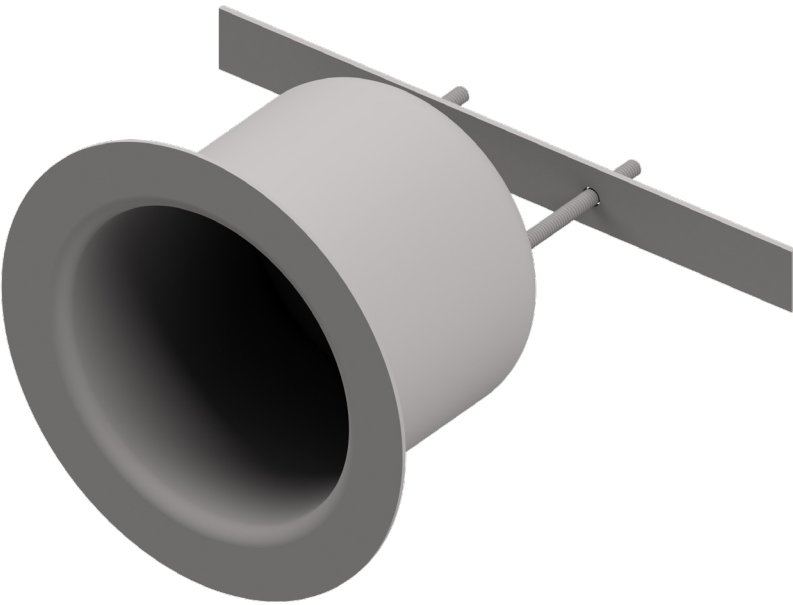


## TOILET PAPER HOLDERS - A720

Item: \_\_\_\_\_


☐ **A720** Toilet Paper Holder

### STANDARD FEATURES

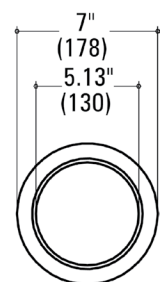
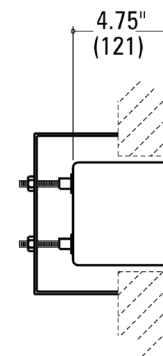
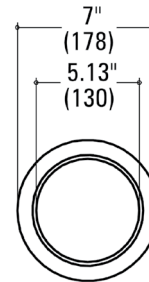
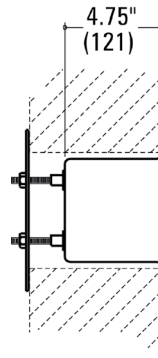
- **Recessed Wall Mounted Fixture.**
- Fabricated using heavy gauge type 304 stainless steel.



**WARNING:** Cancer and Reproductive Harm  
- www.P65Warnings.ca.gov.

### ► DESCRIPTION/SPECIFICATION

Metcraft wall mounted recessed tissue holder is deep drawn using heavy gauge type 304 stainless steel. Back corners are rounded for easy cleaning and sanitation. Tissue holder is back mounted using 1/4"-20 diameter threaded steel rods and hex nuts. A "U" shaped bracket is provided for wall thickness less than 4 3/4" (121mm). A flat wall plate is used for wall thicknesses greater than 4 3/4" (121mm).



Due to continuous product improvement Metcraft reserves the right to make changes in design and specifications without prior notice. All dimensions should be verified with the factory for current information.

**APPROVED FOR  
MANUFACTURING**

Company: \_\_\_\_\_ Name: \_\_\_\_\_  
Signature: \_\_\_\_\_ Date: \_\_\_\_\_