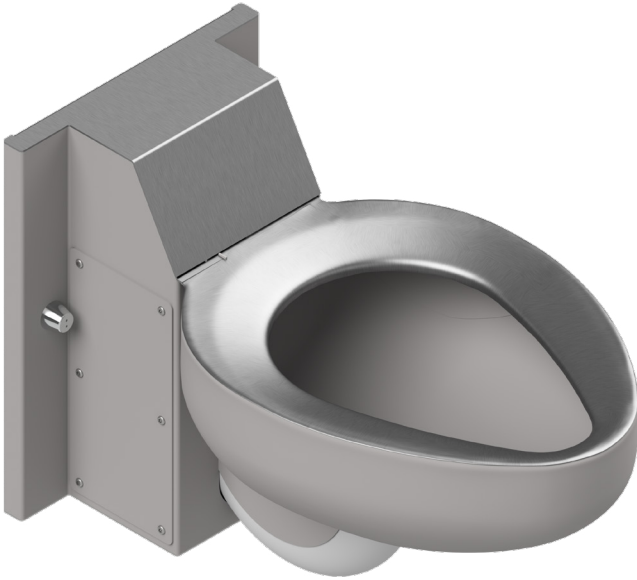


TOILET FIXTURE - R4610-FV4.75
Replaces CRANE 3-462 Rapidway

Item: _____



Unit may be pictured with some optional features.



WARNING: Cancer and Reproductive Harm
- www.P65Warnings.ca.gov.


► DESCRIPTION

This Toilet Fixture is designed for high abuse areas without an accessible pipe chase. The fixture is fabricated using heavy gauge type 304 stainless steel, seamlessly welded to form a vandal resistant unit. Internal piping is stainless steel. Exposed surfaces are polished to a satin finish, except for the integral seat which is polished to a bright finish.

► PERFORMANCE STANDARDS

Metcraft's standard toilet is a 1.6 gpf (6.0 lpf) fixture with a 3" (76mm) waste outlet. Metcraft offers a "High Efficiency Toilet" (HET) 1.28 gpf (4.8 lpf) with a 2 3/8" (60mm) waste outlet as an option. Metcraft bowls and assemblies are designed to withstand 5000 lb. (22kN) loading without permanent deflection and damage. This fixture meets or exceeds ASME A112.19.3 / CSA B45.4 standards for "Stainless Steel Plumbing Fixtures". The trap will pass a 2 1/8" (54mm) dia. ball. A minimum 1" (25mm) supply providing 35psi (241kPa) flushing pressure is required.

1.6 gpf (6.0 Lpf) Fixtures - 3" waste connection

 **4610** Back supply connection 1 1/2" (38mm) FIPT.

1.28 gpf (4.8 Lpf) Fixtures - 2-3/8" waste connection

 HET4610 Back supply connection 1 1/2" (38mm) FIPT.

STANDARD FEATURES

- **Front mounted fixture, wall outlet waste.**
- **Toilet Bowl-**
 - Elongated.
 - High polished integral seat.
 - Self draining flushing rim.
 - Blowout flushing action.
 - Fully enclosed trap.
- **Hardware-**
 - Cap nuts provided for carrier bolts.

► INSTALLATION

The fixtures are designed for use with a standard blowout carrier (carrier is supplied by other manufacturers). The fixture is supplied with three 7/8" (22mm) dia. mounting holes to accept 5/8" (16mm) studs and three tamper-resistant cap nuts. The installer must provide wall openings for piping per rough-in drawings provided by Metcraft.

Water Consumption:

With a low consumption flush valve - 1.6 gpf (6 liters)

With a HET consumption flush valve - 1.28 gpf (4.8 liters)

RECOMMENDED FLUSH VALVES

	SLOAN	ZURN	DELANY
Concealed low consumption	611-1.6	Z6611-1.6	F540-1.6
Concealed HET	611-1.28	Z6611-1.28	-

Listed by



