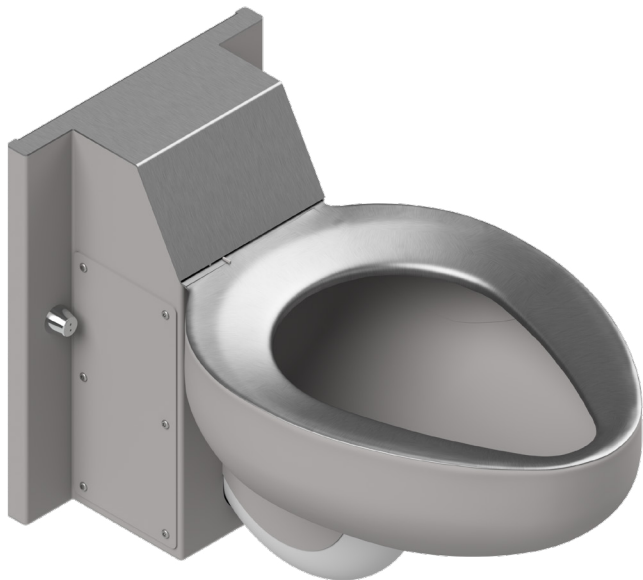


TOILET FIXTURE - R4610-FV-5 HA
Replaces ELJER 111-0365 & 111-0377 and AMERICAN STANDARD 2511.012

Item: _____



Unit may be pictured with some optional features.

1.6 gpf (6.0 Lpf) Fixtures - 3" waste connection☐ **4610 HA** Back supply connection 1 1/2" (38mm) FIPT.**1.28 gpf (4.8 Lpf) Fixtures - 2-3/8" waste connection**☐ **HET4610 HA** Back supply connection 1 1/2" (38mm) FIPT.**STANDARD FEATURES**

- **Front mounted fixture, wall outlet waste.**
- **Toilet Bowl-**
 - Elongated.
 - High polished integral seat.
 - Self draining flushing rim.
 - Blowout flushing action.
 - Fully enclosed trap.
- **Hardware-**
 - Cap nuts provided for carrier bolts.

**WARNING:** Cancer and Reproductive Harm
- www.P65Warnings.ca.gov.**► DESCRIPTION**

This Toilet Fixture is designed for high abuse areas without an accessible pipe chase. The fixture is fabricated using heavy gauge type 304 stainless steel, seamlessly welded to form a vandal resistant unit. Internal piping is stainless steel. Exposed surfaces are polished to a satin finish, except for the integral seat which is polished to a bright finish.

► PERFORMANCE STANDARDS

Metcraft's standard toilet is a 1.6 gpf (6.0 lpf) fixture with a 3" (76mm) waste outlet. Metcraft offers a "High Efficiency Toilet" (HET) 1.28 gpf (4.8 lpf) with a 2 3/8" (60mm) waste outlet as an option. Metcraft bowls and assemblies are designed to withstand 5000 lb. (22kN) loading without permanent deflection and damage. This fixture meets or exceeds ASME A112.19.3 / CSA B45.4 standards for "Stainless Steel Plumbing Fixtures". The trap will pass a 2 1/8" (54mm) dia. ball. A minimum 1" (25mm) supply providing 35psi (241kPa) flushing pressure is required.

► INSTALLATION

The fixtures are designed for use with a standard blowout carrier (carrier is supplied by other manufacturers). The fixture is supplied with three 7/8" (22mm) dia. mounting holes to accept 5/8" (16mm) studs and three tamper-resistant cap nuts. The installer must provide wall openings for piping per rough-in drawings provided by Metcraft.

Water Consumption:

With a low consumption flush valve - 1.6 gpf (6 liters)

With a HET consumption flush valve - 1.28 gpf (4.8 liters)

RECOMMENDED FLUSH VALVES

	SLOAN	ZURN	DELANY
Concealed low consumption	611-1.6	Z6611-1.6	F540-1.6
Concealed HET	611-1.28	Z6611-1.28	-

Listed by



TOILET WASTE

- ☐ **GW** Gasket waste outlet (Standard).
☐ **PE** Plain end waste - 4" off fixture.

PRODUCT OPTIONS

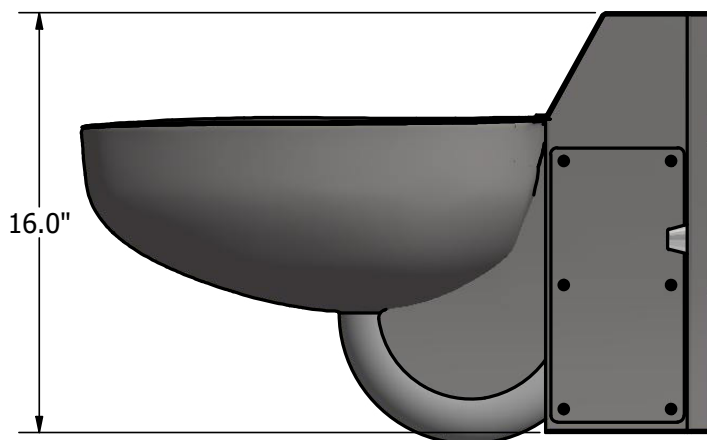
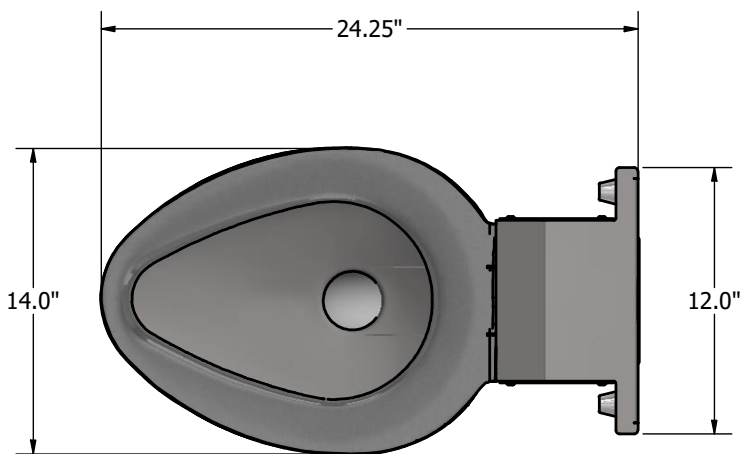
- ☐ **MS** High Polished Seat (Standard).
☐ **HS** Hinged Seat
☐ **HO** Punched for hinged seat (By Others).
☐ **PCC** Powder Coat - Anti-microbial White.

OPTIONAL ACCESSORIES

- ☐ **A247** Flush valve thru wall connector.
 Wall Thickness: _____
☐ **A611** Flush Valve access Panel.
☐ **TSC** Toilet Shipping Cover

TOILET FIXTURE - R4610-FV-5 HA

Item: _____



Due to continuous product improvement Metcraft reserves the right to make changes in design and specifications without prior notice. All dimensions should be verified with the factory for current information.

**APPROVED FOR
MANUFACTURING**

Company: _____ Name: _____
 Signature: _____ Date: _____